

Acidentes ocorridos nas Rodovias Federais em 2005.

Rodovia BR 116 – BA

(Extensão 970 Km)

Resumo

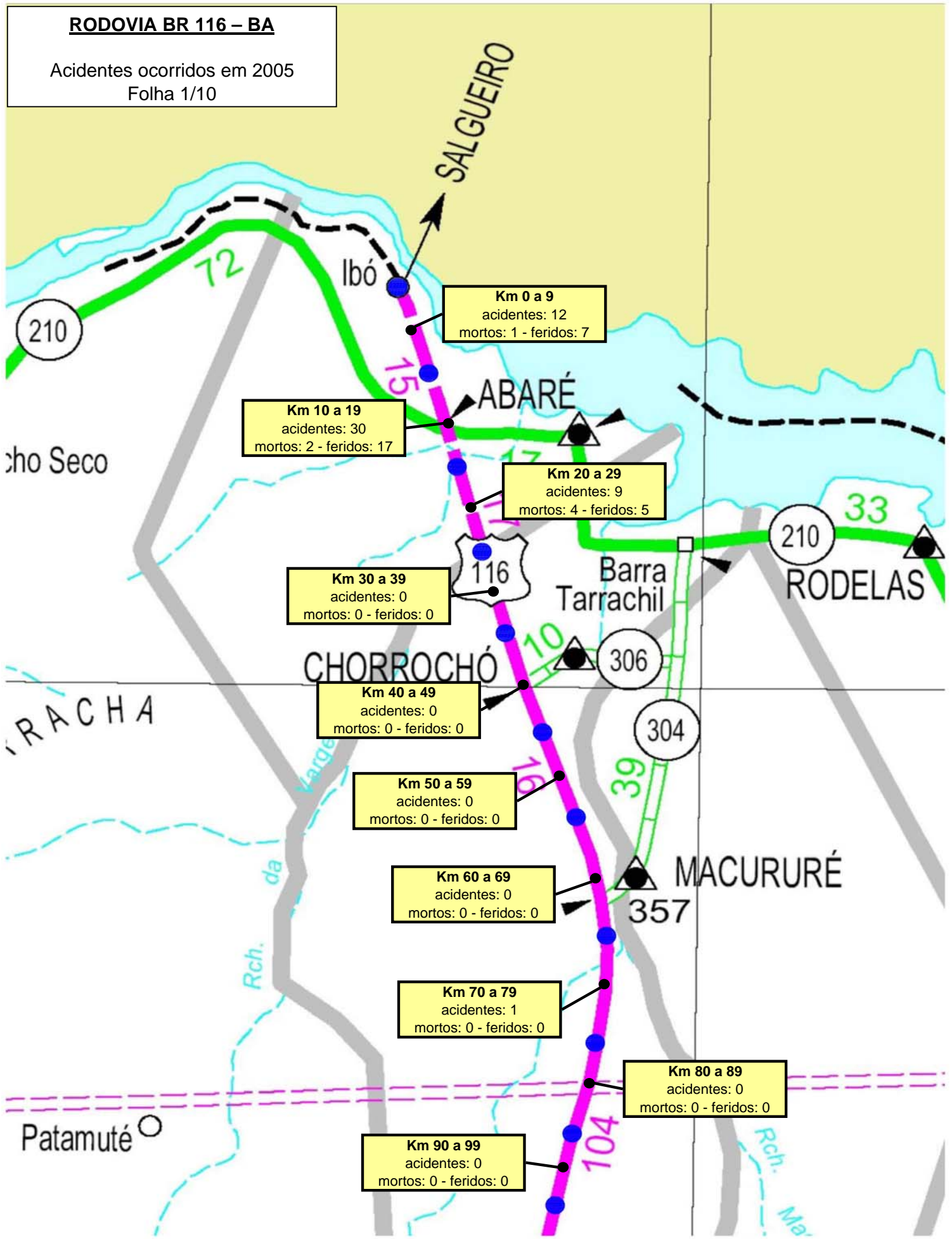
1.550 Acidentes

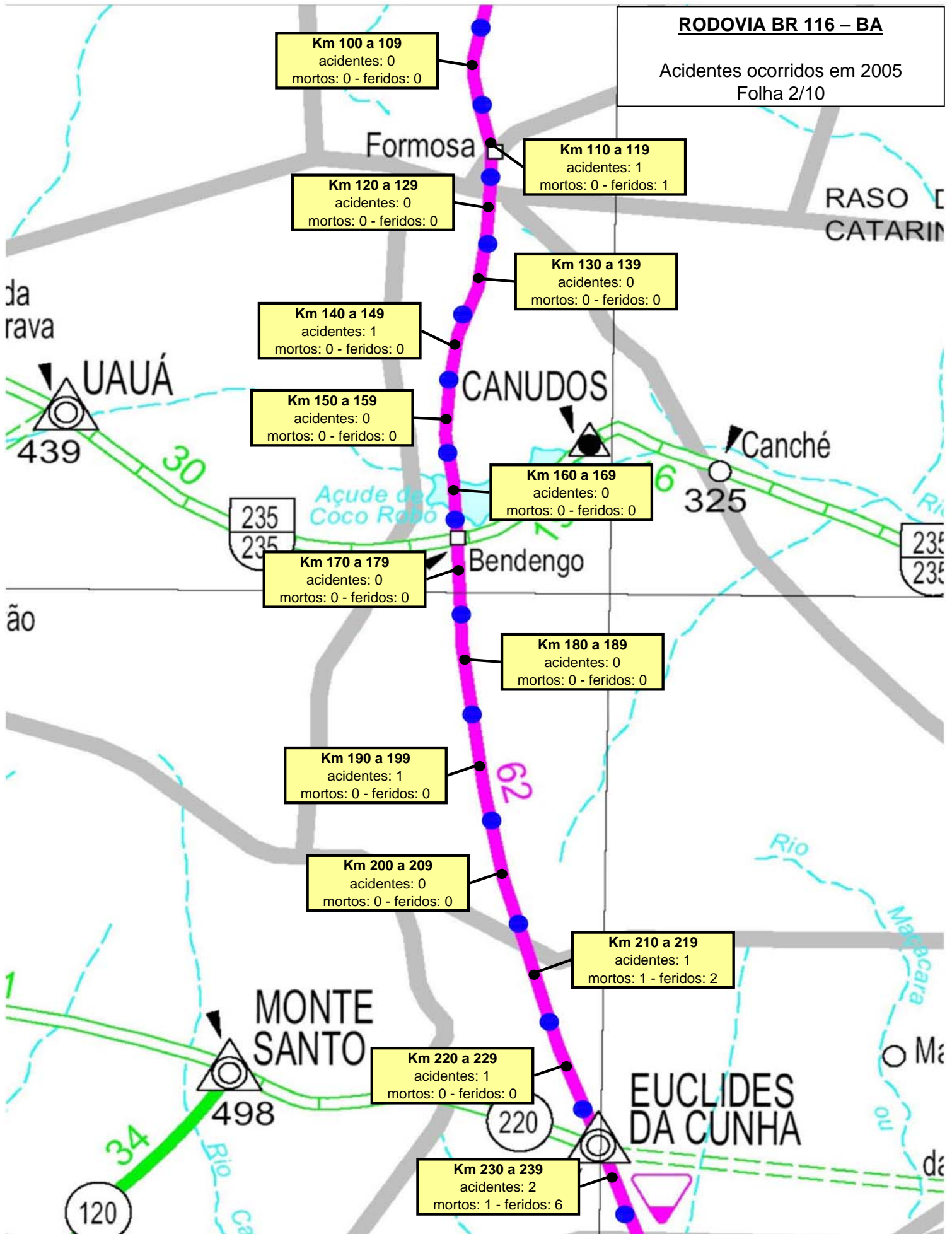
154 Vítimas Fatais

890 Feridos

RODOVIA BR 116 – BA

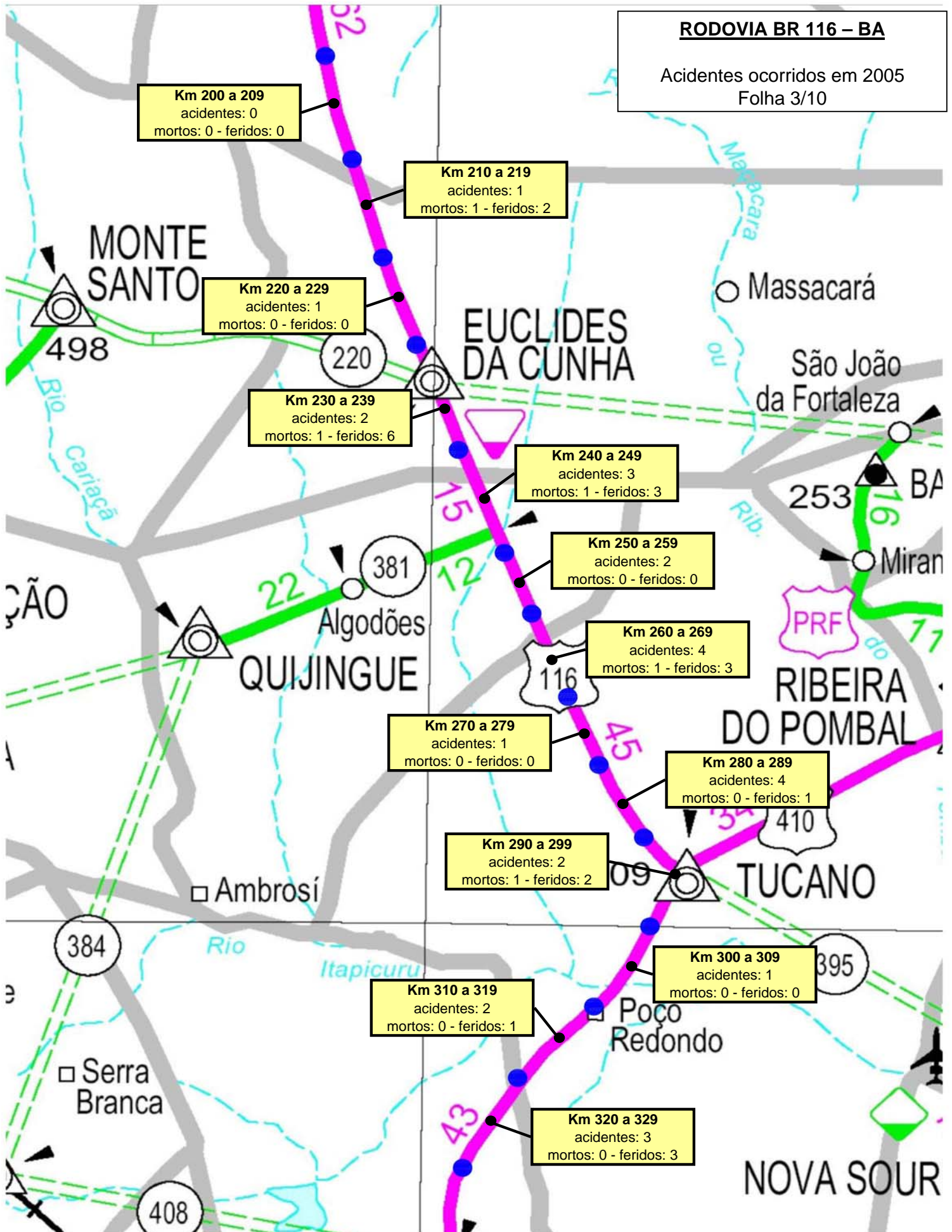
Acidentes ocorridos em 2005
Folha 1/10

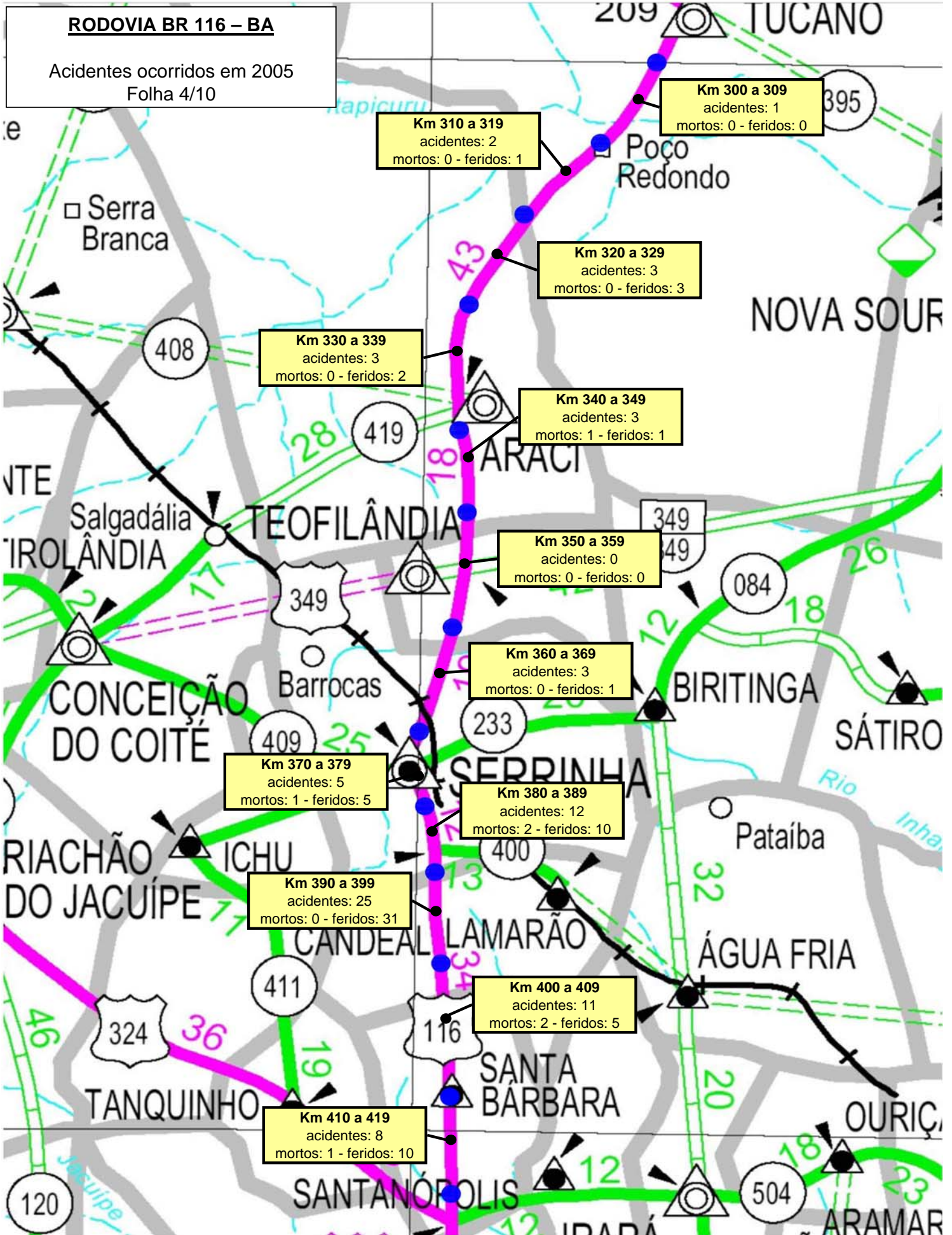


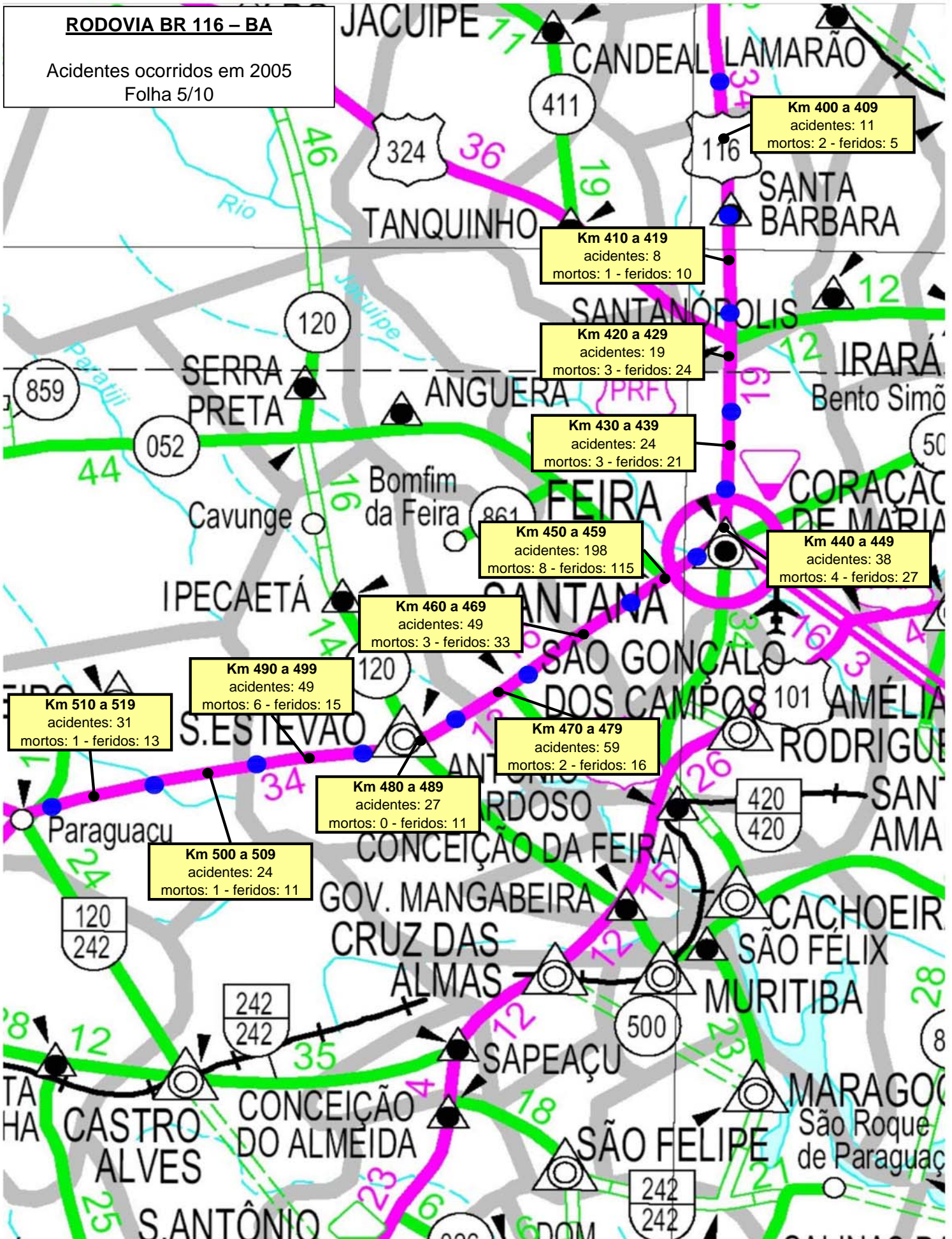


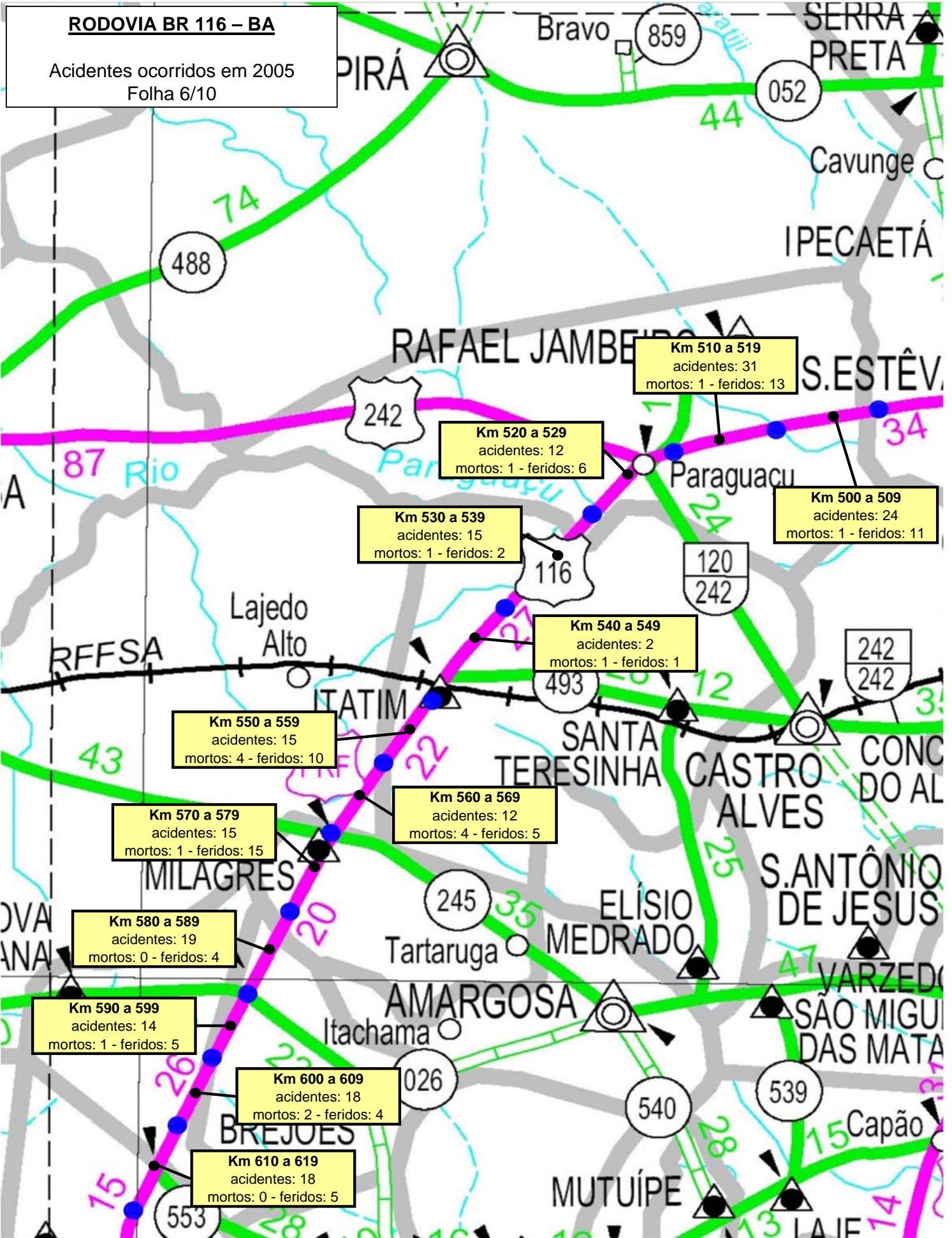
RODOVIA BR 116 – BA

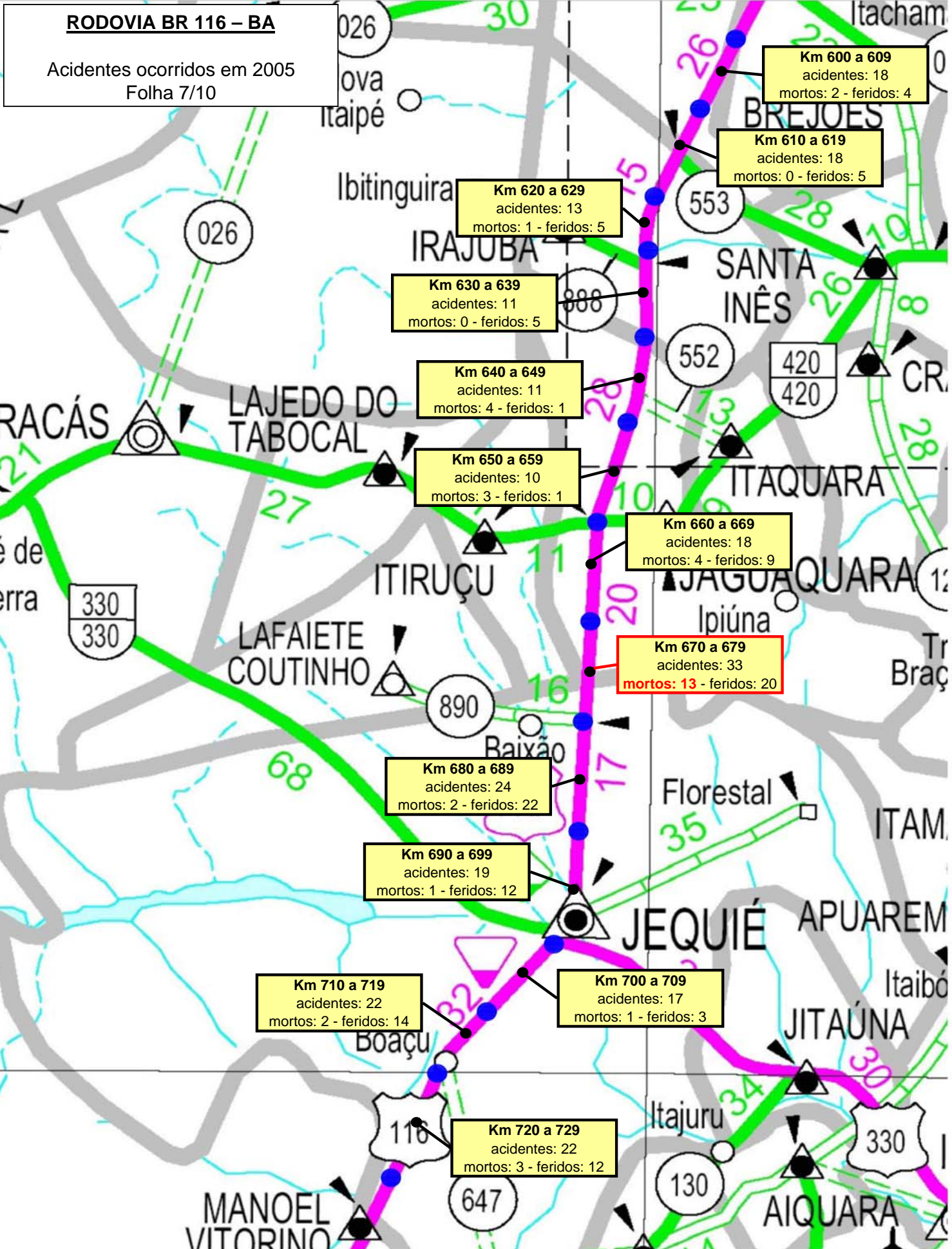
Acidentes ocorridos em 2005
Folha 3/10



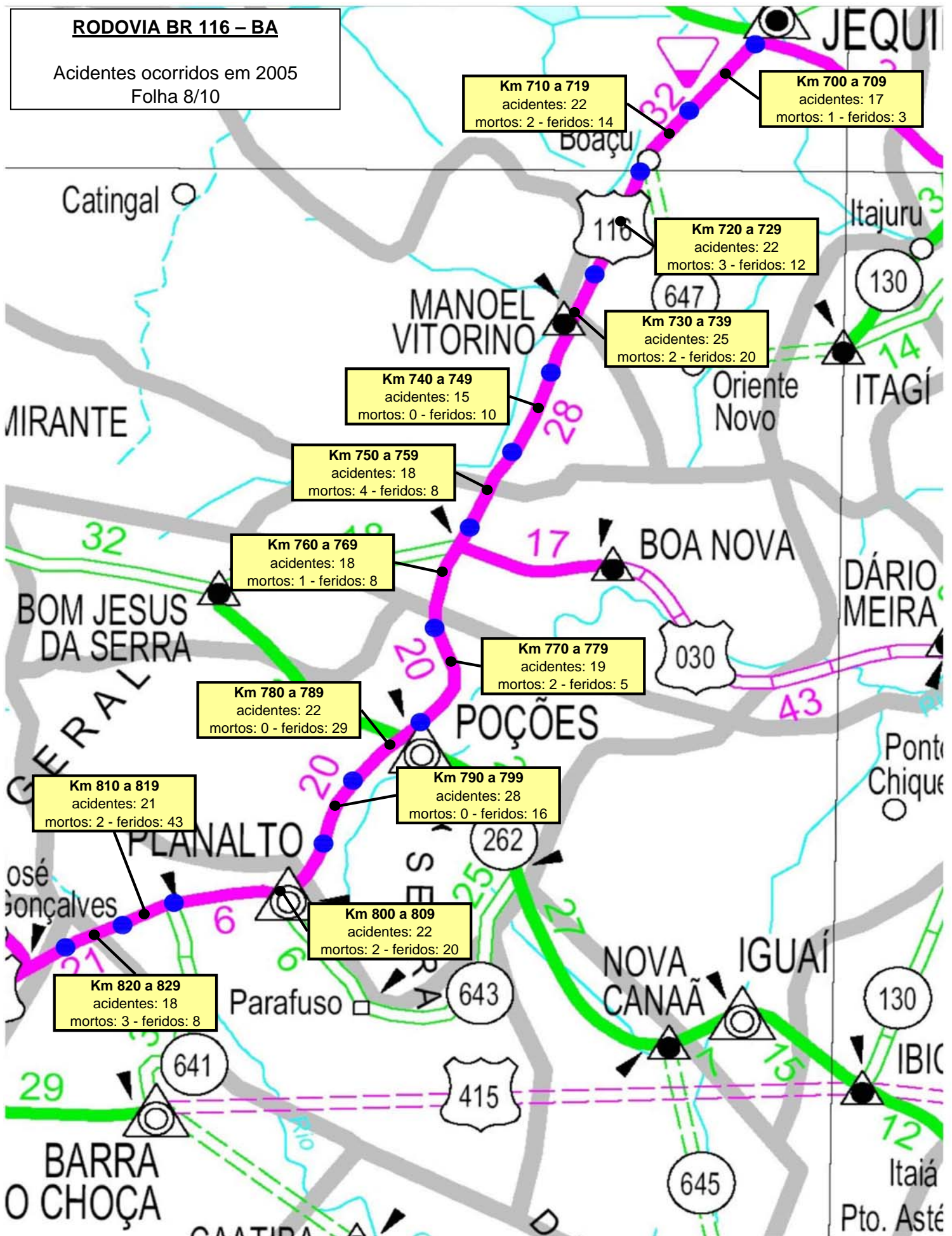


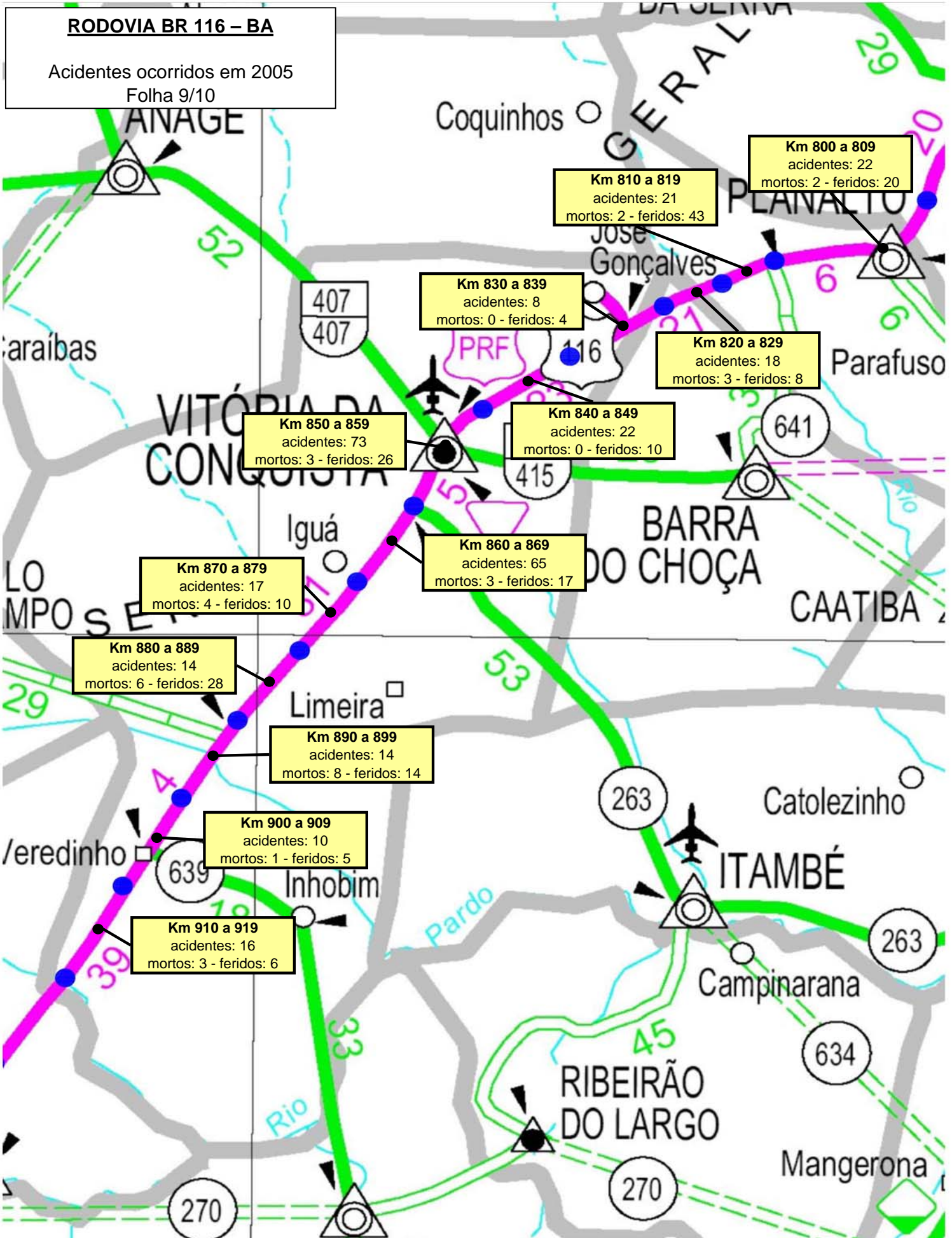


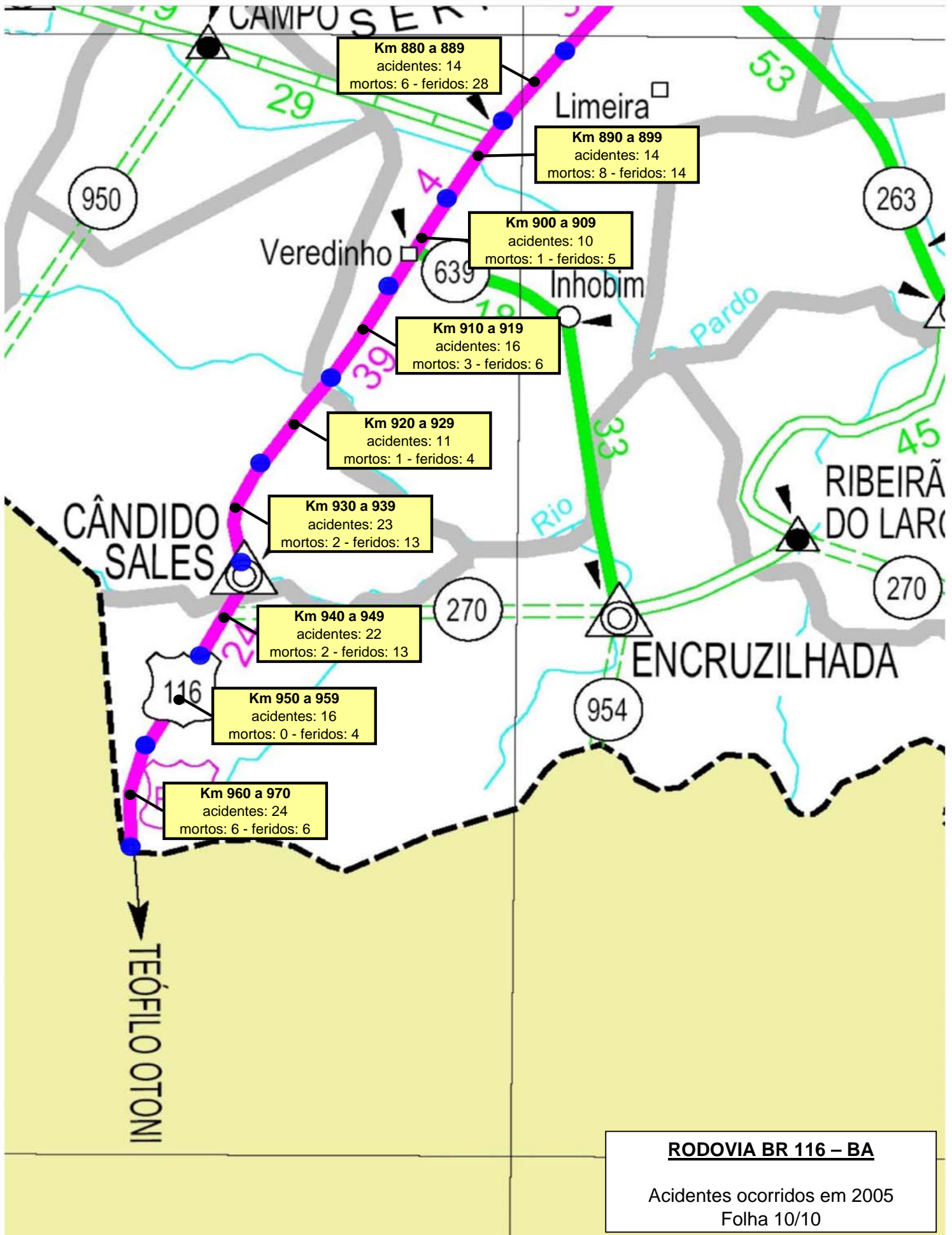




RODOVIA BR 116 – BA
Acidentes ocorridos em 2005
Folha 8/10

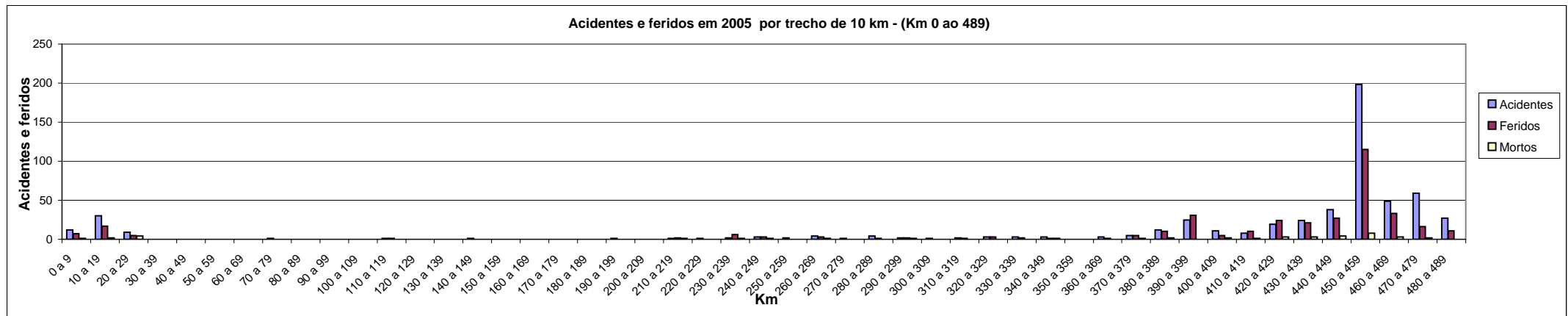




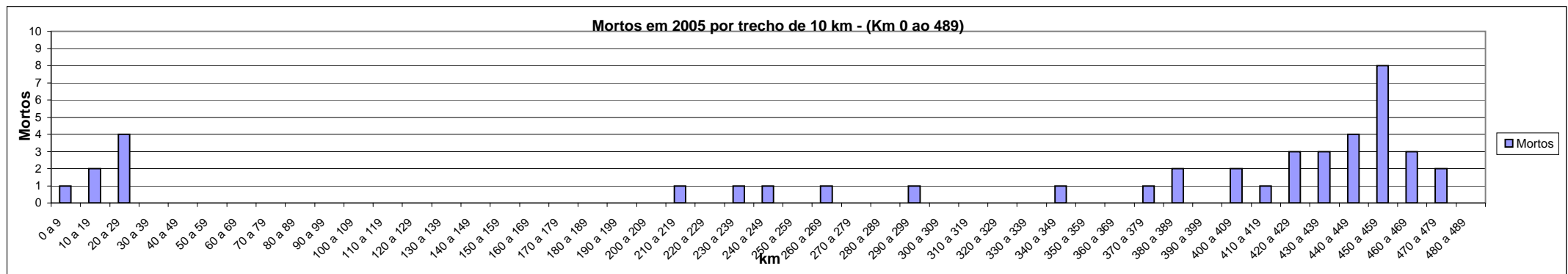


Acidentes ocorridos em 2005.

Km	0 a 9	10 a 19	20 a 29	30 a 39	40 a 49	50 a 59	60 a 69	70 a 79	80 a 89	90 a 99	100 a 109	110 a 119	120 a 129	130 a 139	140 a 149	150 a 159	160 a 169	170 a 179	180 a 189	190 a 199	200 a 209	210 a 219	220 a 229	230 a 239	240 a 249	250 a 259	260 a 269	270 a 279	280 a 289	290 a 299	300 a 309	310 a 319	320 a 329	330 a 339	340 a 349	350 a 359	360 a 369	370 a 379	380 a 389	390 a 399	400 a 409	410 a 419	420 a 429	430 a 439	440 a 449	450 a 459	460 a 469	470 a 479	480 a 489
Acidentes	12	30	9					1				1			1					1		1	1	2	3	2	4	1	4	2	1	2	3	3	3		3	5	12	25	11	8	19	24	38	198	49	59	27
Feridos	7	17	5					0				1			0					0		2	0	6	3	0	3	0	1	2	0	1	3	2	1		1	5	10	31	5	10	24	21	27	115	33	16	11
Mortos	1	2	4					0				0			0					0		1	0	1	1	0	1	0	0	0	0	0	0	0	0	0	1	2	0	2	1	3	3	4	8	3	2	0	

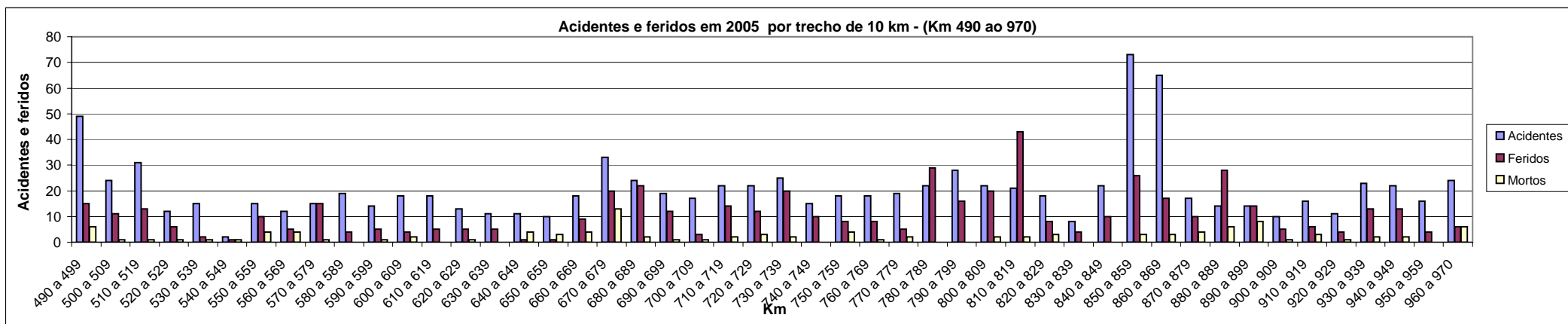


Km	0 a 9	10 a 19	20 a 29	30 a 39	40 a 49	50 a 59	60 a 69	70 a 79	80 a 89	90 a 99	100 a 109	110 a 119	120 a 129	130 a 139	140 a 149	150 a 159	160 a 169	170 a 179	180 a 189	190 a 199	200 a 209	210 a 219	220 a 229	230 a 239	240 a 249	250 a 259	260 a 269	270 a 279	280 a 289	290 a 299	300 a 309	310 a 319	320 a 329	330 a 339	340 a 349	350 a 359	360 a 369	370 a 379	380 a 389	390 a 399	400 a 409	410 a 419	420 a 429	430 a 439	440 a 449	450 a 459	460 a 469	470 a 479	480 a 489
Mortos	1	2	4	0	0	0	0	0	0	0	0	0	0	0	0	0	0	0	0	0	0	1	0	1	1	0	1	0	0	0	0	0	0	0	1	0	0	1	2	0	2	1	3	3	4	8	3	2	0



Acidentes ocorridos em 2005.

Km	490 a 499	500 a 509	510 a 519	520 a 529	530 a 539	540 a 549	550 a 559	560 a 569	570 a 579	580 a 589	590 a 599	600 a 609	610 a 619	620 a 629	630 a 639	640 a 649	650 a 659	660 a 669	670 a 679	680 a 689	690 a 699	700 a 709	710 a 719	720 a 729	730 a 739	740 a 749	750 a 759	760 a 769	770 a 779	780 a 789	790 a 799	800 a 809	810 a 819	820 a 829	830 a 839	840 a 849	850 a 859	860 a 869	870 a 879	880 a 889	890 a 899	900 a 909	910 a 919	920 a 929	930 a 939	940 a 949	950 a 959	960 a 970	
Acidentes	49	24	31	12	15	2	15	12	15	19	14	18	18	13	11	11	10	18	33	24	19	17	22	22	25	15	18	18	19	22	28	22	21	18	8	22	73	65	17	14	14	14	10	16	11	23	22	16	24
Feridos	15	11	13	6	2	1	10	5	15	4	5	4	5	5	5	1	1	9	20	22	12	3	14	12	20	10	8	8	5	29	16	20	43	8	4	10	26	17	10	28	14	14	5	6	4	13	13	4	6
Mortos	6	1	1	1	1	1	4	4	1	0	2	0	1	0	0	4	3	4	13	2	1	1	2	3	2	0	4	1	2	0	0	2	2	3	0	0	3	3	4	6	8	1	3	1	2	2	0	6	



Km	490 a 499	500 a 509	510 a 519	520 a 529	530 a 539	540 a 549	550 a 559	560 a 569	570 a 579	580 a 589	590 a 599	600 a 609	610 a 619	620 a 629	630 a 639	640 a 649	650 a 659	660 a 669	670 a 679	680 a 689	690 a 699	700 a 709	710 a 719	720 a 729	730 a 739	740 a 749	750 a 759	760 a 769	770 a 779	780 a 789	790 a 799	800 a 809	810 a 819	820 a 829	830 a 839	840 a 849	850 a 859	860 a 869	870 a 879	880 a 889	890 a 899	900 a 909	910 a 919	920 a 929	930 a 939	940 a 949	950 a 959	960 a 970
Mortos	6	1	1	1	1	1	4	4	1	0	1	2	0	1	0	4	3	4	13	2	1	1	2	3	2	0	4	1	2	0	0	2	2	3	0	0	3	3	4	6	8	1	3	1	2	2	0	6

